

MONTHLY SUMMARY OF STATISTICS

VICTORIA

EMBARGO: 11:30AM (CANBERRA TIME) TUES 17 OCT 2000

C O N T E N T S

	<i>page</i>
Notes	2
Selected features	3
 TABLES	
List of tables.	4
Demography.	5
Labour.	6
Wages.	9
Prices	10
Meat production	11
Building	12
Finance	15
Retail.	16
Trade	17
Tourism	18
 APPENDIX	
Impact of The New Tax System (TNTS) on data series in this publication	19

- For further information about these and related statistics, contact the National Information Service on 1300 135 070, or James Darragh on Melbourne 03 9615 7476.

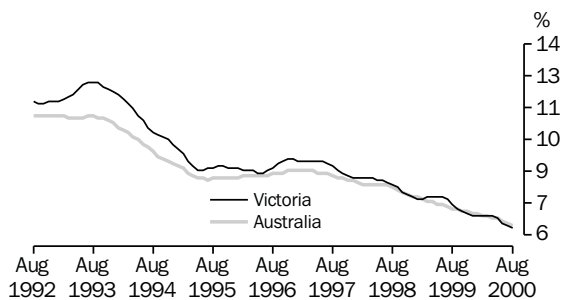
NOTES

FORTHCOMING ISSUES	<p><i>ISSUE</i></p> <p>October 2000</p> <p>November 2000</p> <p>December 2000</p> <p>January 2001</p> <p>February 2001</p> <p>March 2000</p> <p><i>RELEASE DATE</i></p> <p>21 November 2000</p> <p>19 December 2000</p> <p>23 January 2001</p> <p>20 February 2001</p> <p>20 March 2001</p> <p>17 April 2001</p>
IMPACT OF THE NEW TAX SYSTEM	<p>ABS statistical series are being impacted to varying degrees as a result of The New Tax System (TNTS), introduced in Australia from 1 July 2000. TNTS includes the removal of Wholesale Sales Tax and the introduction of a Goods and Services Tax (GST), and as a result, a number of ABS data series will reflect significant immediate and subsequent impacts (see Appendix on page 19 for further details).</p>
SEASONAL ADJUSTMENT	<p>Seasonal adjustment is a means of removing the estimated effects of normal seasonal variations from economic time series so that the effects of other influences are obvious. Seasonal variations are the systematic (though not necessarily regular) intra-year movements of economic time series. These are often the result of non-economic phenomena, such as climatic changes and regular religious festivals, e.g. Christmas and Easter.</p>
TREND ESTIMATE	<p>Smoothing seasonally adjusted series produces a measure of trend by removing the impact of the irregular component of the series. The trend estimates are derived by applying a 13-term Henderson weighted moving average to the respective seasonally adjusted series. Readers are reminded that trend estimates are subject to revision as subsequent months' data become available.</p>
CHANGES IN THIS ISSUE	<p>Data presented in the Commercial Finance Commitments (Table 16) has changed following the annual review of survey coverage. With the introduction of a new sample, Type of Lender estimates at State level are suppressed in accordance with ABS confidentiality requirements as specified in legislation. For further information contact Stuart Veitch on (02) 9268 4317 or the ABS National Inquiry Service.</p>
SYMBOLS AND OTHER USAGES	<p>n.a. not available</p> <p>n.e.c. not elsewhere classified</p> <p>n.p. not available for publication but included in totals where applicable</p> <p>n.y.a. not yet available</p> <p>p preliminary—figure or series subject to revision</p> <p>r figure or series revised since previous issue</p> <p>* estimate has a relative standard error greater than 25% and is therefore subject to sampling variability too high for most practical uses</p> <p>. . not applicable</p> <p>— nil or rounded to zero</p>

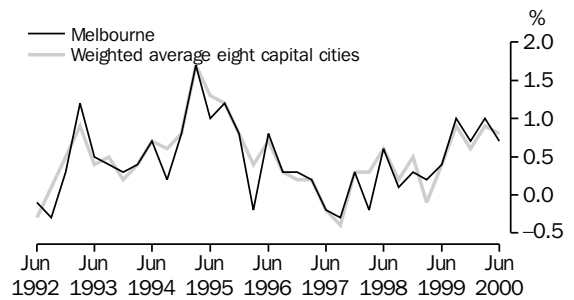
Zia ABBASI,
Regional Director, Victoria

SELECTED FEATURES

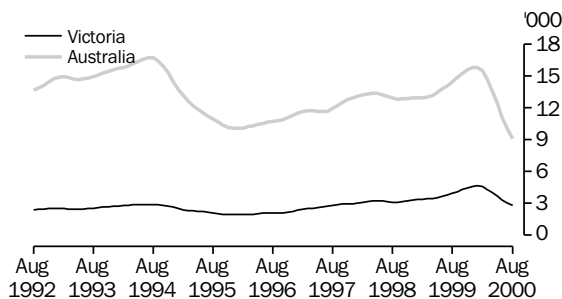
UNEMPLOYMENT RATE, Trend—Monthly



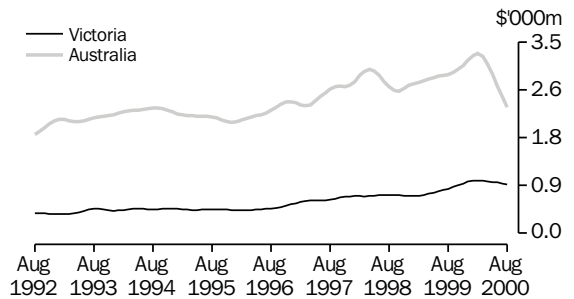
CONSUMER PRICE INDEX, Change from previous quarter



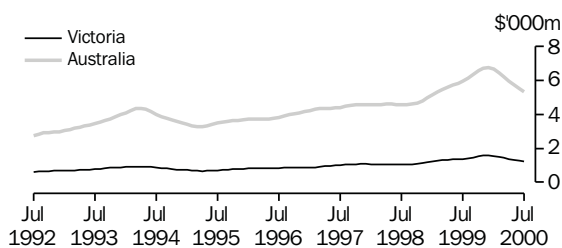
NEW DWELLING UNITS APPROVED, Trend—Monthly



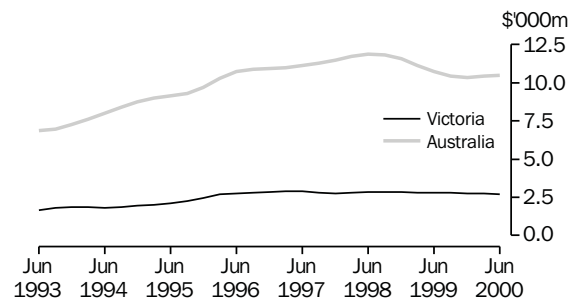
VALUE OF ALL BUILDINGS APPROVED, Trend—Monthly



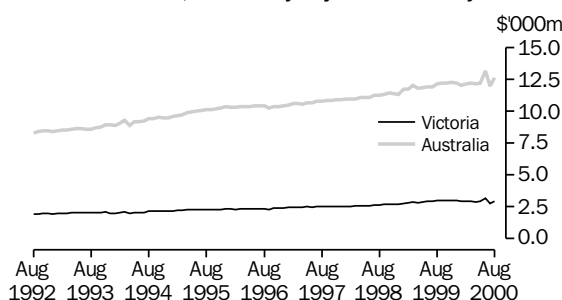
TOTAL VALUE OF SECURED HOUSING
FINANCE COMMITMENTS TO INDIVIDUALS, Trend—
Monthly



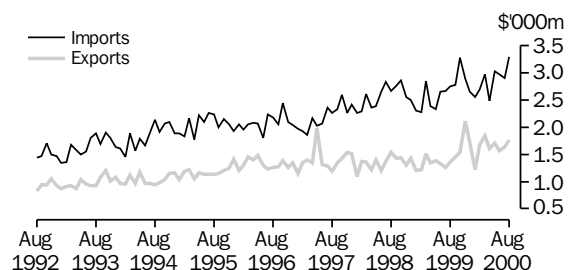
PRIVATE NEW CAPITAL EXPENDITURE, Trend—Quarterly



RETAIL TURNOVER, Seasonally Adjusted—Monthly



MERCHANDISE IMPORTS AND EXPORTS, Original—
Monthly



LIST OF TABLES

		Page
DEMOGRAPHY	1 Estimated resident population	5
	2 Births, deaths, marriages and divorces	5
LABOUR	3 Labour force status of the civilian population aged 15 years and over	6
	4 Employed persons, by industry	7
	5 Job vacancies	8
	6 Industrial disputes causing stoppage of work	8
	7 Average weekly earnings of employees	9
PRICES	8 Consumer price index—Melbourne	10
	9 Price index of materials used in building—Melbourne	10
MEAT PRODUCTION	10 Livestock slaughterings	11
	11 Meat production	11
BUILDING	12 Building approvals—Melbourne and Victoria	12
	13 New houses and other residential buildings, number of dwelling units	13
	14 Value of building	14
FINANCE	15 Private new capital expenditure, by selected industries and type of asset	15
	16 Commercial finance commitments	15
	17 Secured housing finance commitments, dwelling units	16
RETAIL	18 Retail turnover, by industry (excluding motor vehicles, parts, petrol, etc.)	16
TRADE	19 Exports and imports, by sections of the Australian export and import classifications	17
	20 Overseas trade, major trading partners	17
	21 Value of overseas trade—Victoria and Australia	18
TOURISM	22 Tourist accommodation	18

1

ESTIMATED RESIDENT POPULATION

Period	At end of period			Increase during period		Melbourne Statistical Division at 30 June(a)
	Males	Females	Persons	Natural	Total	
	'000	'000	'000	'000	'000	'000
1996–1997	2 275.2	2 330.0	4 605.2	28.7	45.1	3 321.8
1997–1998	2 301.0	2 353.9	4 654.9	27.7	49.7	3 367.0
1998–1999	2 330.1	2 382.1	4 712.2	26.2	57.2	3 417.2
1997						
December qtr	2 286.3	2 341.1	4 627.4	7.4	9.6	..
1998						
March qtr	2 295.3	2 348.9	4 644.3	7.4	16.9	..
June qtr	2 301.0	2 353.9	4 654.9	6.8	10.7	..
September qtr p	2 308.2	2 360.8	4 669.0	6.4	14.1	..
December qtr p	2 315.3	2 368.6	4 683.8	6.6	14.8	..
1999						
March qtr p	2 324.6	2 376.8	4 701.4	6.9	17.6	..
June qtr p	2 330.1	2 382.1	4 712.2	6.4	10.8	..
September qtr p	2 337.8	2 388.9	4 726.6	6.2	14.4	..
December qtr p	2 345.1	2 396.3	4 741.5	6.3	14.9	..
2000						
March qtr p	2 352.3	2 401.6	4 753.9	7.2	17.0	..

(a) Based on the 1998 Statistical Division boundaries.

Source: Australian Demographic Statistics (Cat. no. 3101.0) (quarterly).

2

BIRTHS, DEATHS, MARRIAGES AND DIVORCES

	Registrations				Annual rate per 1,000 of mean estimated resident population				
	Births	Deaths (including infant deaths)	Marriages	Divorces	Births	Deaths	Marriages	Divorces	Infant deaths per 1,000 live births
	no.	no.	no.	no.	rate	rate	rate	rate	rate
1996–97	61 232	32 570	25 664	13 046	13.36	7.11	5.60	2.85	4.46
1997–98	60 143	32 423	25 955	11 916	13.00	7.01	5.61	2.58	4.86
1998–99 r	59 374	32 298	26 351	12 579	12.68	6.90	5.63	2.69	5.36
1997									
December qtr	15 259	7 813	7 533	3 181
Year—1997	60 610	32 760	25 456	12 463	13.16	7.11	5.53	2.71	4.82
1998									
March qtr	14 577	7 169	8 530	2 663
June qtr	14 870	8 097	6 070	2 908
September qtr	r 15 197	r 8 984	3 912	3 188
December qtr	r 14 648	r 7 850	7 860	3 548
Year—1998 r	59 292	32 100	26 372	12 307	12.74	6.90	5.67	2.64	4.82
1999									
March qtr r	14 939	7 259	8 657	2 738
June qtr r	14 590	8 205	5 922	3 105
September qtr	p 14 965	p 8 747	r 4 211	3 461
December qtr	p 14 554	p 8 220	8 462	3 438
Year—1999 r	p 59 048	p 32 431	27 252	12 742	12.53	6.88	5.78	2.70	5.62
2000									
March qtr p	14 191	6 978	8 678	2 733

Source: Demography, Victoria (Cat. no. 3311.2) (annual); Australian Demographic Statistics (Cat. no. 3101.0) (quarterly).

LABOUR FORCE STATUS OF THE CIVILIAN POPULATION AGED 15 YEARS AND OVER

	<i>Employed</i>		<i>Unemployed looking for work</i>			<i>Labour force</i>	<i>Not in labour force</i>	<i>Civilian population 15 years and over</i>	<i>Unemployment rate</i>	<i>Participation rate</i>
	<i>Full-time</i>	<i>Total</i>	<i>Full-time</i>	<i>Part-time</i>	<i>Total</i>					
	'000	'000	'000	'000	'000	'000	'000	'000	%	%
MALES										
1999										
June	1 072.6	1 248.4	87.4	11.5	98.8	1 347.2	490.4	1 837.7	7.3	73.3
July	1 082.6	1 243.2	80.7	14.8	95.5	1 338.7	501.3	1 840.0	7.1	72.8
August	1 072.4	1 225.7	80.3	18.1	98.4	1 324.2	518.2	1 842.3	7.4	71.9
September	1 079.6	1 243.7	82.8	17.7	100.5	1 344.2	500.5	1 844.7	7.5	72.9
October	1 077.2	1 242.2	71.5	15.9	87.4	1 329.6	518.0	1 847.6	6.6	72.0
November	1 068.9	1 228.3	74.6	14.4	89.0	1 317.4	533.2	1 850.5	6.8	71.2
December	1 097.1	1 262.9	74.8	20.1	95.0	1 357.9	495.6	1 853.5	7.0	73.3
2000										
January	1 077.8	1 232.6	78.0	13.5	91.4	1 324.0	531.6	1 855.6	6.9	71.4
February	1 102.6	1 254.6	71.9	18.8	90.7	1 345.3	512.6	1 857.8	6.7	72.4
March	1 084.4	1 249.8	71.7	21.1	92.8	1 342.5	517.5	1 860.0	6.9	72.2
April	1 084.6	1 255.0	69.1	21.0	90.1	1 345.1	517.1	1 862.2	6.7	72.2
May	1 091.6	1 254.7	75.4	17.0	92.4	1 347.2	517.1	1 864.3	6.9	72.3
June	1 088.9	1 259.4	66.3	16.9	83.2	1 342.6	523.9	1 866.5	6.2	71.9
July	1 114.2	1 282.7	61.0	14.9	75.9	1 358.5	510.5	1 869.0	5.6	72.7
August	1 092.4	1 265.9	66.1	18.3	84.5	1 350.4	521.2	1 871.5	6.3	72.2
FEMALES										
1999										
June	523.6	951.8	44.5	25.1	69.6	1 021.4	896.8	1 918.2	6.8	53.2
July	542.5	963.3	38.6	35.3	73.9	1 037.2	883.4	1 920.6	7.1	54.0
August	527.8	953.3	38.4	29.0	67.4	1 020.6	902.3	1 922.9	6.6	53.1
September	539.5	981.9	45.5	33.9	79.3	1 061.2	864.1	1 925.3	7.5	55.1
October	536.0	975.8	42.3	25.8	68.1	1 043.9	884.1	1 928.0	6.5	54.1
November	533.8	975.3	38.5	27.7	66.3	1 041.6	889.1	1 930.7	6.4	54.0
December	568.0	997.4	43.5	26.8	70.4	1 067.8	865.6	1 933.4	6.6	55.2
2000										
January	547.3	943.2	43.4	33.8	77.3	1 020.5	915.0	1 935.4	7.6	52.7
February	546.2	965.8	49.9	34.2	84.1	1 049.9	887.6	1 937.5	8.0	54.2
March	546.9	981.2	47.6	33.3	80.9	1 062.1	877.4	1 939.5	7.6	54.8
April	541.5	978.8	44.0	30.3	74.3	1 053.1	888.3	1 941.5	7.1	54.2
May	544.2	990.4	45.5	25.6	71.1	1 061.6	881.8	1 943.4	6.7	54.6
June	562.8	1 009.7	42.2	25.0	67.2	1 076.8	868.5	1 945.3	6.2	55.4
July	575.0	1 016.8	39.8	28.6	68.4	1 085.2	862.6	1 947.8	6.3	55.7
August	550.1	1 001.3	39.7	22.0	61.6	1 063.0	887.3	1 950.3	5.8	54.5
PERSONS										
1999										
June	1 596.2	2 200.2	131.9	36.6	168.4	2 368.6	1 387.3	3 755.9	7.1	63.1
July	1 625.1	2 206.5	119.4	50.1	169.4	2 375.9	1 384.6	3 760.6	7.1	63.2
August	1 600.2	2 179.0	118.7	47.1	165.8	2 344.8	1 420.5	3 765.3	7.1	62.3
September	1 619.1	2 225.5	128.3	51.6	179.9	2 405.4	1 364.5	3 770.0	7.5	63.8
October	1 613.2	2 218.0	113.7	41.8	155.5	2 373.5	1 402.1	3 775.6	6.6	62.9
November	1 602.7	2 203.7	113.2	42.1	155.3	2 359.0	1 422.2	3 781.2	6.6	62.4
December	1 665.1	2 260.3	118.3	47.0	165.3	2 425.7	1 361.2	3 786.8	6.8	64.1
2000										
January	1 625.1	2 175.8	121.4	47.3	168.7	2 344.5	1 446.6	3 791.1	7.2	61.8
February	1 648.7	2 220.4	121.8	53.0	174.8	2 395.2	1 400.1	3 795.3	7.3	63.1
March	1 631.3	2 230.9	119.3	54.4	173.7	2 404.6	1 394.9	3 799.6	7.2	63.3
April	1 626.1	2 233.8	113.1	51.3	164.4	2 398.2	1 405.4	3 803.6	6.9	63.1
May	1 635.8	2 245.2	120.9	42.7	163.6	2 408.8	1 399.0	3 807.7	6.8	63.3
June	1 651.7	2 269.0	108.5	41.9	150.4	2 419.4	1 392.4	3 811.8	6.2	63.5
July	1 689.2	2 299.5	100.8	43.5	144.3	2 443.8	1 373.1	3 816.8	5.9	64.0
August	1 642.4	2 267.2	105.8	40.3	146.1	2 413.3	1 408.5	3 821.8	6.1	63.1

Source: Labour Force, Victoria (Cat. no. 6202.2) (quarterly).

4

EMPLOYED PERSONS, BY INDUSTRY

	May 1999	Aug 1999	Nov 1999	Feb 2000	May 2000	Aug 2000
<i>Industry division</i>	'000	'000	'000	'000	'000	'000
MALES						
Agriculture, forestry and fishing	58.6	56.3	56.1	56.6	63.2	62.3
Mining	*3.1	*2.9	*3.6	5.1	7.4	5.4
Manufacturing	241.9	236.6	244.6	255.5	256.0	264.3
Electricity, gas and water supply	14.4	13.9	10.6	11.1	14.2	12.2
Construction	130.1	133.8	137.0	136.3	140.5	140.4
Wholesale trade	81.6	88.6	90.4	77.6	76.9	71.9
Retail trade	166.0	161.7	163.9	166.0	163.8	149.4
Accommodation, cafes and restaurants	41.7	40.0	41.2	46.2	46.0	41.8
Transport and storage	72.0	75.5	70.8	71.8	72.8	72.7
Communication services	27.8	27.9	29.6	35.7	38.2	37.8
Finance and insurance	43.4	36.8	38.9	42.7	38.7	42.2
Property and business services	154.3	162.2	148.7	144.5	143.6	157.8
Government administration and defence	28.8	27.7	35.2	34.3	29.3	31.6
Education	45.4	46.4	50.2	48.0	44.2	47.5
Health and community services	42.3	39.5	36.4	41.5	44.0	50.9
Cultural and recreational services	27.3	32.3	30.4	31.7	32.4	35.5
Personal and other services	41.5	43.4	40.8	50.0	43.6	42.2
Total	1 220.4	1 225.7	1 228.3	1 254.6	1 254.7	1 265.9
FEMALES						
Agriculture, forestry and fishing	26.8	26.4	29.1	25.8	29.2	30.1
Mining	*0.3	*0.6	*0.8	*1.4	*2.0	*2.0
Manufacturing	98.1	94.5	98.9	101.6	108.1	105.9
Electricity, gas and water supply	*3.9	*3.0	*2.4	*2.4	*2.8	*1.7
Construction	17.2	17.3	18.5	21.0	17.4	19.2
Wholesale trade	42.8	46.1	50.0	34.5	37.2	35.8
Retail trade	168.5	174.9	172.2	173.7	170.7	167.0
Accommodation, cafes and restaurants	44.6	47.0	48.9	48.3	56.9	54.7
Transport and storage	22.2	20.8	22.7	20.9	23.7	25.7
Communication services	14.0	14.1	17.3	19.5	17.5	18.2
Finance and insurance	37.3	39.7	45.7	49.4	48.1	48.5
Property and business services	108.9	123.6	114.5	116.8	118.4	129.4
Government administration and defence	38.7	38.6	40.7	34.2	34.8	39.3
Education	101.1	105.1	97.1	93.6	99.8	108.3
Health and community services	144.3	137.6	149.6	156.8	158.7	161.1
Cultural and recreational services	32.6	26.2	26.4	24.9	28.4	28.0
Personal and other services	38.7	37.6	40.4	41.0	36.9	26.4
Total	940.0	953.3	975.3	965.8	990.4	1 001.3
PERSONS						
Agriculture, forestry and fishing	85.3	82.7	85.2	82.4	92.4	92.3
Mining	*3.4	*3.5	*4.4	6.5	9.3	7.4
Manufacturing	340.0	331.2	343.5	357.1	364.1	370.1
Electricity, gas and water supply	18.3	16.9	13.0	13.5	17.0	13.9
Construction	147.3	151.1	155.6	157.3	157.9	159.7
Wholesale trade	124.4	134.7	140.4	112.1	114.1	107.6
Retail trade	334.5	336.7	336.0	339.7	334.5	316.4
Accommodation, cafes and restaurants	86.3	87.1	90.0	94.5	102.9	96.5
Transport and storage	94.2	96.4	93.5	92.7	96.5	98.5
Communication services	41.9	42.0	46.9	55.1	55.7	56.0
Finance and insurance	80.7	76.5	84.7	92.1	86.8	90.8
Property and business services	263.3	285.8	263.2	261.3	262.0	287.1
Government administration and defence	67.5	66.3	75.8	68.5	64.1	71.0
Education	146.5	151.5	147.3	141.6	144.0	155.8
Health and community services	186.6	177.1	186.0	198.3	202.7	212.0
Cultural and recreational services	60.0	58.5	56.8	56.6	60.8	63.5
Personal and other services	80.2	80.9	81.2	91.0	80.5	68.6
Total	2 160.3	2 179.0	2 203.7	2 220.4	2 245.2	2 267.2

Source: Labour Force, Victoria (Cat. no. 6202.2) (quarterly).

5

JOB VACANCIES

Month	Vacancies all persons '000	Sector		Job vacancy rate %
		Public	Private	
		'000	'000	
1999				
May	22.1	2.5	19.6	1.05
August	29.3	3.0	26.4	1.39
November	31.0	3.8	27.1	1.49
2000				
February	27.0	4.4	22.5	1.33
May	30.9	6.7	24.2	1.50
August	48.3	4.1	*44.2	2.29

Source: Job Vacancies and Overtime, Australia (Cat. no. 6354.0) (quarterly).

6

INDUSTRIAL DISPUTES CAUSING STOPPAGE OF WORK

	Disputes		Employees involved		Working days lost				
	Beginning in period	Total	Beginning in period	Total	Manufacturing	Construction	Education, health, community services	Other industries	Total
	no.	no.	'000	'000	'000	'000	'000	'000	'000
1999									
March	29	32	3.6	4.2	7.3	1.0	—	1.3	9.6
April	15	21	13.9	14.8	7.1	13.0	—	1.8	21.9
May	23	25	3.6	3.9	7.5	0.1	0.1	1.2	8.8
June	23	25	10.9	11.3	13.1	1.2	0.1	1.2	15.6
July	16	23	10.3	11.0	11.5	6.6	1.1	0.5	19.6
August	29	34	75.9	76.5	42.7	8.5	10.6	6.1	67.9
September	13	14	14.0	14.1	19.2	4.6	—	0.2	24.0
October	21	23	8.2	8.4	1.6	5.1	0.7	0.6	8.0
November	17	21	17.8	17.9	5.2	19.6	—	0.6	25.4
December	29	34	5.6	6.5	6.2	1.7	—	0.5	8.4
2000									
January	19	24	2.7	2.9	3.9	2.4	—	0.8	7.1
February	18	24	7.8	8.5	6.4	12.8	—	1.5	20.7
March	17	21	4.9	8.1	4.9	10.4	2.0	2.4	19.7
April	8	15	1.7	4.2	4.0	4.0	0.5	1.4	9.9
May	22	26	8.7	8.9	1.9	7.0	0.0	0.5	9.4
June	19	23	6.2	6.6	6.8	0.3	0.0	2.4	9.5

Source: Industrial Disputes, Australia (Cat. no. 6321.0) (monthly).

7

AVERAGE WEEKLY EARNINGS OF EMPLOYEES

Month	Males			Females			Persons		
	Full-time adult ordinary time earnings	Full-time adult total earnings	All males total earnings	Full-time adult ordinary time earnings	Full-time adult total earnings	All females total earnings	Full-time adult ordinary time earnings	Full-time adult total earnings	All employees total earnings
	\$	\$	\$	\$	\$	\$	\$	\$	\$
1999									
February	769.20	823.70	710.90	658.10	673.20	474.40	729.00	769.20	600.30
May	783.00	835.00	717.60	666.20	679.80	486.50	740.60	778.60	608.00
August	772.30	821.00	705.70	685.20	700.80	488.40	740.80	777.60	601.60
November	780.80	838.80	726.90	695.40	712.40	488.80	750.10	793.40	610.80
2000									
February	797.80	843.70	732.30	696.70	710.00	492.60	761.30	795.40	616.20
May	799.10	850.10	739.60	706.00	722.60	504.80	765.90	804.70	626.30

Source: Average Weekly Earnings, States and Australia (Cat. no. 6302.0) (quarterly).

<i>Period</i>	<i>Food</i>	<i>Clothing</i>	<i>Housing</i>	<i>Household equipment and operation</i>	<i>Transport- ation</i>	<i>Tobacco and alcohol</i>	<i>Health and personal care</i>	<i>Recreation and education</i>	<i>All groups</i>	<i>Weighted average of eight capital cities—All groups</i>
1997–1998	120.5	108.9	86.5	115.0	123.3	161.4	162.2	127.6	119.8	120.3
1998–1999	125.1	108.1	86.7	115.1	120.8	166.9	161.1	129.6	120.9	121.8
1999–2000	128.7	107.1	90.7	114.7	127.9	174.2	158.9	131.5	124.1	124.7
1998										
March qtr	120.7	109.0	84.1	115.1	122.1	162.0	163.6	129.4	119.6	120.3
June qtr	121.6	108.9	86.2	115.1	122.0	163.9	165.8	128.8	120.3	121.0
September qtr	123.6	108.9	85.3	115.3	121.0	165.0	166.7	128.4	120.4	121.3
December qtr	124.3	108.2	86.6	115.3	120.6	166.0	165.3	129.0	120.8	121.9
1999										
March qtr	125.8	107.5	87.3	114.7	119.9	167.6	155.7	131.0	121.0	121.8
June qtr	126.7	107.8	87.5	115.1	121.6	169.1	156.6	129.8	121.5	122.3
September qtr	127.8	107.5	88.8	114.3	125.9	169.4	157.0	130.7	122.7	123.4
December qtr	128.6	107.1	90.4	114.4	125.2	173.7	157.0	131.0	123.5	124.1
2000										
March qtr	128.3	106.9	91.7	114.3	129.2	176.5	160.5	132.2	124.7	125.2
June qtr	130.0	106.9	91.7	115.7	131.2	177.3	161.0	131.9	125.6	126.2

Base of each group: year 1989–90=100.0.

Source: *Consumer Price Index, Australia (Cat. no. 6401.0) (quarterly)*.

<i>Group</i>	<i>1999–2000</i>						<i>Weighted average of six state capital cities—Jun qtr 2000</i>
	<i>1997–98</i>	<i>1998–99</i>	<i>1999–2000</i>	<i>Dec qtr</i>	<i>Mar qtr</i>	<i>Jun qtr</i>	
House building							
All groups	117.1	118.0	121.7	120.5	122.9	124.2	125.5
Other than house building							
Structural timber	115.6	116.2	118.5	117.6	119.9	123.2	137.8
Clay bricks	117.9	119.6	123.8	119.3	126.3	130.3	127.0
Ready mix concrete	111.4	112.9	110.8	111.3	110.3	110.1	102.4
Precast concrete products	115.7	123.9	130.9	127.5	133.6	135.8	130.1
Steel decking and cladding	109.4	108.0	109.3	108.5	108.0	113.0	118.2
Structural steel	104.9	104.9	101.3	102.0	100.8	101.0	112.3
Reinforcing steel bar, mesh, etc.	100.8	99.5	93.8	92.6	94.7	94.0	104.5
Aluminium windows	100.0	100.4	105.1	103.6	104.9	110.0	118.3
Fabricated steel products	120.0	124.7	125.6	125.5	125.6	126.1	118.0
Builders' hardware	119.6	122.7	127.6	125.7	126.0	133.6	133.1
Sand and aggregate	116.3	120.5	120.6	120.2	120.2	120.6	123.3
Carpet	102.6	100.1	98.9	99.3	98.0	98.7	102.4
Paint and other coatings	144.7	153.8	162.4	163.0	164.3	164.1	150.7
Non-ferrous pipes and fittings	113.0	111.2	116.6	117.6	117.6	118.2	132.1
All groups excluding electrical materials and mechanical services	111.0	112.3	113.0	112.3	112.9	114.7	116.5
All electrical materials	109.8	112.4	116.8	116.6	117.2	117.4	122.7
All mechanical services	114.9	118.2	120.6	120.1	120.9	121.6	119.8
All plumbing materials	122.8	122.8	127.7	126.1	128.2	130.6	132.5
All groups	111.4	113.2	114.4	113.8	114.5	116.0	117.4

Base of each index: year 1989–90 = 100.0.

Source: *Price Index of Materials Used in Building Other Than House Building, Six State Capital Cities (Cat. no. 6407.0) (quarterly)*; *Price Index of Materials Used in House Building, Six State Capital Cities (Cat. no. 6408.0) (quarterly)*.

10

LIVESTOCK SLAUGHTERINGS

	<i>Cattle</i>	<i>Calves</i>	<i>Sheep</i>	<i>Lambs</i>	<i>Pigs</i>
	'000	'000	'000	'000	'000
1997–1998	1 798.0	767.2	3 285.6	6 385.7	1 567.7
1998–1999	1 751.3	714.4	3 079.6	6 699.4	1 572.8
1999–2000	1 524.2	678.5	3 815.7	7 144.0	1 443.7
1999					
May	134.3	43.8	262.6	466.2	135.2
June	126.2	78.5	230.4	524.4	133.1
July	124.9	90.6	246.1	554.1	127.0
August	117.4	182.8	238.9	535.4	123.0
September	112.3	142.5	282.6	625.0	126.3
October	123.3	50.2	329.1	605.3	116.2
November	132.5	20.7	344.2	639.7	117.3
December	133.5	9.0	339.1	610.6	131.2
2000					
January	124.0	7.2	341.0	530.8	109.9
February	136.1	8.1	398.8	590.6	117.6
March	140.8	16.9	392.6	627.4	131.2
April	106.9	26.4	273.0	515.7	110.1
May	140.7	50.1	341.0	655.0	126.7
June	131.3	74.0	289.6	654.9	107.2
July	108.6	82.8	272.2	620.1	93.8
August	127.3	189.8	303.9	703.6	103.4

Source: Unpublished data, Monthly Livestock Collection.

11

MEAT PRODUCTION

	<i>Meat (carcass weight)</i>				
	<i>Beef</i>	<i>Veal</i>	<i>Mutton</i>	<i>Lamb</i>	<i>Pigmeat</i>
	tonnes	tonnes	tonnes	tonnes	tonnes
1997–1998	389 087	15 578	63 470	119 972	112 504
1998–1999	398 815	14 225	61 647	128 379	114 581
1999–2000	351 371	13 371	76 713	140 205	106 691
1999					
May	30 429	878	5 121	9 085	10 164
June	28 023	1 520	4 615	10 337	9 824
July	28 011	1 729	4 976	11 002	9 358
August	26 379	3 563	4 894	10 232	9 197
September	25 749	2 797	5 943	12 233	9 442
October	28 673	1 010	7 278	11 770	8 698
November	31 629	425	7 038	12 338	8 796
December	31 062	208	6 897	11 709	9 403
2000					
January	29 030	177	6 749	10 608	8 029
February	31 668	198	7 647	11 693	8 499
March	32 739	364	7 598	12 316	9 595
April	24 523	533	5 268	10 200	7 866
May	32 077	970	6 634	13 158	9 689
June	29 732	1 397	5 797	12 955	8 119
July	25 181	1 534	5 791	12 311	7 077
August	29 141	3 638	6 542	14 069	7 875

Source: Unpublished data, Monthly Livestock Collection.

	New dwelling units(a)									
	Private sector		Public sector		Total(b)		Non-residential building(c)			
	no.	\$m	no.	\$m	no.	\$m r	Alterations, additions and conversions(d)	Private sector	Total	Total all building
							\$m	\$m	\$m	\$m
MELBOURNE STATISTICAL DIVISION										
1997-98	27 490	3 026.5	752	56.0	28 242	3 082.6	701.2	2 168.2	2 593.0	6 376.8
1998-99	28 615	3 550.4	666	49.6	29 276	3 600.0	800.3	1 918.6	2 642.3	7 042.6
1999-2000	36 843	5 058.7	611	51.1	37 454	5 109.8	1 019.0	2 226.9	2 654.3	8 783.1
1999										
May	2 642	337.1	37	2.4	2 679	339.5	63.0	174.4	202.0	604.5
June	2 450	320.9	46	4.0	2 495	324.9	69.2	108.4	125.1	519.2
July	2 755	353.0	88	6.3	2 843	359.3	92.2	183.6	208.6	660.2
August	3 775	494.7	39	4.3	3 814	499.0	86.1	159.3	226.3	811.5
September	3 046	406.8	72	5.9	3 118	412.7	76.9	203.3	218.9	708.6
October	2 817	372.2	93	8.0	2 910	380.2	84.7	158.2	201.6	666.5
November	3 213	417.2	59	4.6	3 272	421.8	93.0	167.5	194.5	709.3
December	3 122	443.9	65	6.4	3 187	450.3	72.0	148.6	213.2	735.5
2000										
January	3 250	535.7	19	1.6	3 269	537.3	66.9	171.6	188.6	792.8
February	3 474	457.3	54	4.1	3 528	461.4	87.5	208.2	262.5	811.5
March	3 809	533.3	9	0.8	3 818	534.1	84.9	153.0	171.1	790.1
April	2 548	336.3	30	2.3	2 578	338.6	97.8	232.1	289.9	726.3
May	2 600	363.4	40	3.5	2 640	367.0	83.7	158.1	173.4	624.1
June	2 434	344.8	43	3.3	2 477	348.1	93.3	283.3	305.5	747.0
July	2 316	395.3	36	3.0	2 352	398.3	r 114.9	r 155.3	r 523.0	r 1 036.2
August	1 961	291.2	32	3.1	1 993	294.3	88.8	193.0	227.8	610.9
TOTAL VICTORIA										
1997-98	34 178	3 811.3	1 171	88.6	35 349	3 899.8	858.5	2 476.9	3 064.5	7 822.8
1998-99	37 194	4 482.6	894	67.2	38 088	4 549.9	951.2	2 262.5	3 125.7	8 626.8
1999-2000	47 474	6 318.8	787	65.1	48 261	6 383.9	1 210.7	2 622.3	3 215.2	10 809.8
1999										
May	3 516	436.2	42	3.1	3 558	439.3	74.4	202.3	241.6	755.4
June	3 214	408.5	51	4.6	3 265	413.2	83.4	156.3	183.2	679.8
July	3 574	445.9	134	9.2	3 708	455.1	105.2	212.7	249.0	809.4
August	4 626	587.9	66	6.4	4 692	594.4	101.9	204.6	282.9	979.3
September	3 972	514.7	105	8.6	4 077	523.3	95.7	222.1	245.6	864.6
October	3 788	488.4	98	8.4	3 886	496.8	99.5	186.1	240.9	837.2
November	4 161	529.3	68	5.4	4 229	534.7	107.3	198.0	235.7	877.8
December	4 047	555.1	67	6.6	4 114	561.7	88.1	186.6	266.2	916.0
2000										
January	4 046	630.6	27	2.3	4 073	633.0	80.3	196.5	235.1	948.3
February	4 597	592.8	73	5.9	4 670	598.7	101.2	235.1	325.5	1 025.5
March	4 791	653.1	12	1.1	4 803	654.2	103.3	185.8	215.8	973.4
April	3 334	433.0	39	3.0	3 373	436.0	112.8	257.2	327.3	876.1
May	3 412	462.0	49	4.2	3 461	466.3	103.5	213.2	240.2	810.0
June	3 126	425.9	49	3.8	3 175	429.7	111.7	324.3	350.9	892.2
July	2 851	462.1	38	3.1	2 889	465.2	125.7	r 180.8	r 562.6	r 1 153.5
August	2 524	364.7	59	5.3	2 583	370.0	104.9	219.0	264.3	739.3

(a) Valued at \$10,000 and over.

(b) Excludes dwelling units created as a result of conversions or construction of non-residential buildings.

(c) Valued at \$50,000 and over.

(d) Includes alterations and additions creating dwellings, alterations and additions not creating dwellings and conversions.

Source: Building Approvals, Victoria (Cat. no. 8731.2) (quarterly).

Period	New houses				New other residential buildings			
	Approved	Commenced	Under construction(a)	Completed	Approved	Commenced	Under construction(a)	Completed
	no.	no.	no.	no.	no.	no.	no.	no.
1996–1997	19 805	18 652	8 937	17 613	6 805	6 047	4 151	5 727
1997–1998	27 937	26 004	12 368	22 425	7 412	7 598	5 148	6 542
1998–1999	29 227	29 165	14 455	26 926	8 861	8 307	6 198	7 029
1998								
December qtr	6 873	7 399	13 127	6 995	2 375	1 682	5 175	1 906
1999								
March qtr	7 071	6 494	13 846	5 699	2 461	2 159	5 752	1 559
June qtr	7 757	7 910	14 455	7 281	2 319	2 466	6 198	1 864
September qtr	9 280	8 155	15 667	6 939	3 173	3 354	7 844	1 702
December qtr	9 412	8 817	15 741	8 719	2 373	2 680	8 910	1 566
2000								
March qtr	9 417	8 860	18 261	6 340	3 435	2 458	9 118	2 211

(a) Under construction at the end of the period.

Source: *Building Activity, Victoria* (Cat. no. 8752.2) (quarterly); *Building Approvals, Victoria* (Cat. no. 8731.2) (quarterly).

	Residential buildings		Non-residential buildings						
	New	Alterations and additions	Shops	Factories	Offices	Education	Health	Other	Total
	\$m	\$m	\$m	\$m	\$m	\$m	\$m	\$m	\$m
COMMENCED									
1996–1997	2 692.2	761.0	348.2	343.8	508.5	410.3	303.6	1 003.3	6 371.1
1997–1998	3 850.5	891.1	598.5	241.8	428.6	270.9	250.2	1 399.8	7 931.4
1998–1999	4 496.3	987.2	444.1	263.6	428.1	485.0	239.9	1 186.0	8 530.2
1998									
December qtr	1 066.4	291.0	137.8	79.9	136.2	175.6	95.1	429.7	2 411.7
1999									
March qtr	1 046.8	223.8	75.3	64.4	98.3	98.2	41.1	190.0	1 837.9
June qtr	1 257.1	250.4	119.8	64.3	91.1	78.7	76.9	341.1	2 279.4
September qtr	1 540.9	305.2	119.0	69.5	83.6	86.0	71.7	242.1	2 518.0
December qtr	1 544.5	278.8	110.4	65.8	176.6	83.2	75.9	188.1	2 523.2
2000									
March qtr	1 483.2	303.1	110.3	89.0	108.4	122.6	103.4	149.3	2 569.3
UNDER CONSTRUCTION AT END OF PERIOD									
1996–1997	1 582.3	358.5	284.6	214.9	233.4	310.0	236.2	1 741.7	4 961.6
1997–1998	2 274.1	412.4	406.6	141.9	241.6	320.2	279.8	1 466.0	5 542.6
1998–1999	2 745.1	451.3	420.8	120.9	190.2	485.8	243.5	1 611.2	6 268.8
1998									
December qtr	2 430.6	450.5	427.2	134.7	253.1	489.2	257.4	1 566.8	6 009.6
1999									
March qtr	2 644.3	471.4	402.8	138.2	203.8	522.4	243.7	1 461.3	6 087.9
June qtr	2 745.1	451.3	420.8	120.9	190.2	485.8	243.5	1 611.2	6 268.8
September qtr	3 229.8	531.2	440.2	117.8	129.6	527.3	237.1	1 503.3	6 716.2
December qtr	3 493.2	561.2	305.7	110.0	206.0	491.7	219.6	1 433.6	6 821.0
2000									
March qtr	3 923.4	642.0	361.2	137.0	228.2	504.2	283.6	1 480.8	7 560.4
COMPLETED									
1996–1997	2 617.6	768.5	364.8	295.6	404.0	342.0	194.6	1 106.7	6 093.8
1997–1998	3 213.6	866.6	474.7	338.4	449.4	283.2	208.2	1 738.4	7 572.4
1998–1999	4 068.1	992.4	487.3	294.3	524.9	328.5	305.1	1 110.3	8 111.0
1998									
December qtr	1 080.2	259.6	179.9	70.0	139.6	107.3	51.6	340.7	2 229.1
1999									
March qtr	855.2	215.9	100.6	64.1	155.6	69.2	56.6	312.4	1 829.5
June qtr	1 134.9	280.2	118.0	83.1	121.3	118.8	93.2	210.2	2 159.7
September qtr	1 075.3	235.3	116.3	76.1	147.0	50.2	81.2	375.3	2 156.7
December qtr	1 319.3	260.9	277.4	75.1	101.6	110.3	94.0	279.1	2 517.6
2000									
March qtr	1 088.9	238.3	67.2	63.7	86.7	109.1	40.2	327.8	1 935.3

Source: Building Activity, Victoria (Cat. no. 8752.2) (quarterly).

15

PRIVATE NEW CAPITAL EXPENDITURE, BY SELECTED INDUSTRIES AND TYPE OF ASSET

Period	Selected industries				Type of asset	
	Mining	Manufacturing	Other selected industries	Total	New buildings and structures	Equipment, plant and machinery
	\$m	\$m	\$m	\$m	\$m	\$m
ACTUAL						
1998–1999	1 234	2 954	7 180	11 368	3 211	8 157
1999–2000	616	3 379	7 022	11 017	2 776	8 240
1999						
March qtr	321	652	1 665	2 639	862	r 1 777
June qtr	306	803	1 758	2 868	668	2 200
September qtr	205	918	1 709	2 832	799	r 2 033
December qtr	194	928	1 849	2 970	r 711	2 260
2000						
March qtr r	66	721	1 622	2 409	595	1 814
June qtr	151	812	1 842	2 806	672	2 134
EXPECTED						
1999–2000	813	3 513	6 547	10 872	2 664	8 208
2000–2001	704	3 824	5 501	10 029	2 086	7 943

Source: State Estimates of Private New Capital Expenditure (Cat. no. 5646.0) (quarterly).

16

COMMERCIAL FINANCE COMMITMENTS

	Fixed loan facilities						Revolving credit facilities	Total commitments
	Construction	Purchase of real property	Purchase of plant and equipment	Wholesale	Other	Total		
	\$m	\$m	\$m	\$m	\$m	\$m		\$m
1999								
May	183.6	508.8	157.4	39.4	771.1	1 660.2	1 569.8	3 230.1
June	171.3	623.3	211.8	88.4	2 189.9	3 284.7	1 748.3	5 033.0
July	137.8	521.0	159.0	14.9	684.6	1 517.2	1 977.9	3 495.1
August	234.0	555.5	169.2	25.2	755.8	1 739.7	1 214.0	2 953.7
September	147.8	546.9	205.8	33.8	719.7	1 654.1	1 372.4	3 026.5
October	266.0	610.1	195.8	25.0	1 128.8	2 225.7	1 544.8	3 770.5
November	235.6	633.8	214.3	65.0	502.9	1 651.7	1 288.5	2 940.2
December r	155.9	689.9	254.2	77.7	572.1	1 749.9	1 853.3	3 603.2
2000								
January r	194.5	527.0	154.1	60.5	406.0	1 342.1	1 153.7	2 495.9
February r	118.6	657.5	201.3	57.5	523.4	1 558.3	1 523.2	3 081.5
March r	123.0	672.2	211.1	92.0	683.5	1 781.7	2 013.8	3 795.5
April r	137.3	536.1	185.9	218.3	536.2	1 613.9	1 396.7	3 010.5
May r	149.4	706.6	217.7	91.5	579.4	1 744.5	2 580.0	4 324.5
June r	186.8	775.7	351.5	207.6	1 979.7	3 501.3	1 642.0	5 143.2
July	234.7	549.3	178.6	254.3	719.1	1 936.1	1 486.8	3 422.9

Information relating to Type of Lender has been removed from Table 16. For explanation, please refer to the Notes page.

Source: AusStats (Cat. no. 1405.0.55.001).

Month	Original series		Seasonally adjusted		Trend estimates	
	no.	\$m	no.	\$m	no.	\$m
1999						
May	10 896	1 389	10 752	1 344	10 694	1 341
June	11 305	1 445	10 420	1 346	10 642	1 348
July	10 518	1 334	10 355	1 323	10 686	1 369
August	10 855	1 397	10 668	1 370	10 875	1 409
September	11 377	1 475	11 069	1 408	11 179	1 466
October	11 386	1 534	11 740	1 600	11 509	1 526
November	12 231	1 639	12 127	1 628	11 662	1 565
December	11 652	1 592	11 617	1 568	r 11 616	1 573
2000						
January	8 962	1 242	11 342	1 521	r 11 376	r 1 550
February	11 184	1 498	11 051	1 554	r 11 002	r 1 498
March	11 558	1 554	10 526	1 389	r 10 599	r 1 433
April r	8 681	1 172	9 349	1 298	10 242	1 369
May r	12 592	1 622	11 429	1 462	9 936	1 309
June r	9 352	1 250	8 630	1 152	9 673	1 252
July	9 322	1 169	9 643	1 183	9 458	1 204

Source: Housing Finance for Owner Occupation, Australia (Cat. no. 5609.0) (monthly).

	Food retailing	Department stores	Clothing and soft good retailing	Household good retailing	Recreational good retailing	Other retailing	Hospitality and services	Total
	\$m	\$m	\$m	\$m	\$m	\$m	\$m	\$m
1999								
June	1 126.2	220.4	217.2	333.9	143.7	303.8	392.7	2 737.7
July	1 210.5	263.2	219.0	336.4	136.5	322.8	438.8	2 927.2
August	1 177.9	221.3	209.5	337.6	139.8	315.1	422.3	2 823.5
September	1 186.2	248.5	222.6	347.8	149.5	324.5	438.8	2 917.9
October	1 242.0	259.3	234.5	379.3	148.5	324.2	448.9	3 036.6
November	1 231.9	304.1	243.3	392.3	157.8	338.4	441.7	3 109.6
December	1 463.8	528.1	339.8	498.2	233.8	439.8	526.4	4 030.0
2000								
January	1 219.9	228.0	221.5	358.1	138.2	267.6	412.3	2 845.5
February	1 155.2	195.9	181.7	326.1	120.7	268.1	406.6	2 654.2
March	1 244.7	224.2	217.4	342.8	132.1	292.6	451.7	2 905.5
April	1 163.1	260.6	224.2	309.6	117.4	291.9	388.4	2 755.3
May	1 180.1	265.3	248.2	349.8	118.9	305.2	393.8	2 861.3
June	1 173.5	298.6	279.7	416.3	124.1	313.6	399.9	3 005.8
July	r 1 211.9	202.4	173.1	316.4	115.5	294.2	394.1	r 2 707.6
August	1 236.0	234.6	189.4	340.4	124.0	315.0	414.1	2 853.6

Source: Retail Trade, Australia (Cat. no. 8501.0) (monthly).

19

EXPORTS AND IMPORTS, BY SECTIONS OF THE AUSTRALIAN EXPORT AND IMPORT CLASSIFICATIONS(a)

	1999–2000		Two months ending Aug 2000	
	Imports	Exports	Imports	Exports
	\$m	\$m	\$m	\$m
0 Food and live animals chiefly for food(b)(c)	1 358	4 425	245	786
1 Beverages and tobacco(b)(c)	141	187	39	37
2 Crude materials, inedible (except fuels)(b)(c)	625	1 580	117	288
3 Mineral fuels, lubricants, and related materials(c)	1 763	1 222	343	203
4 Animal and vegetable oils, fats and waxes(b)(c)	93	113	17	17
5 Chemicals and related products, n.e.c.(b)(c)	3 352	1 024	583	192
6 Manufacturing goods classified chiefly by material(b)(c)	4 684	2 681	858	477
7 Machinery and transport equipment(b)(c)	14 769	3 963	2 672	648
8 Miscellaneous manufactured articles(b)(c)	5 835	1 162	1 161	235
9 Commodities and transactions of merchandise trade, n.e.c.(d)	1 133	2 677	178	513
Total	33 754	19 033	6 213	3 396

(a) Any discrepancies between sums of the component items and totals are due to rounding.

(b) Excludes export commodities subject to a confidentiality restriction. These are included in Division 9.

(c) Excludes imports commodities subject to a confidentiality restriction. These are included in Division 9.

(d) Includes export and import commodities subject to a confidentiality restriction.

Source: Overseas Trade: Fasttraccs Database.

20

OVERSEAS TRADE, MAJOR TRADING PARTNERS(a)

Country	1998–99		1999–2000		Two months ending August 2000	
	Imports	Exports	Imports	Exports	Imports	Exports
	\$m	\$m	\$m	\$m	\$m	\$m
Belgium-Luxembourg	239	102	258	110	47	16
Brazil	118	48	105	46	24	11
Canada	392	125	445	135	73	27
China	2 537	669	3 030	1 124	694	181
Fiji	180	242	194	286	18	47
Finland	188	9	187	9	39	1
France	619	131	622	136	120	18
Germany	2 341	407	2 402	397	416	71
Hong Kong (SAR of China)	431	900	403	945	88	183
India	261	192	262	193	60	39
Indonesia	1 078	226	893	295	216	55
Italy	1 038	288	1 036	332	187	64
Japan	4 133	1 676	4 416	1 860	896	347
Korea, Republic of	847	862	870	1 236	163	332
Malaysia	873	431	1 118	514	170	65
Mexico	103	90	111	74	23	22
Netherlands	292	109	318	105	43	15
New Zealand	1 333	1 635	1 491	2 297	249	321
Pakistan	87	43	85	156	18	20
Papua New Guinea	64	188	67	139	6	20
Philippines	157	387	163	385	38	69
Saudi Arabia	107	511	221	704	28	121
Singapore	510	1 080	632	1 475	89	200
South Africa	125	217	166	229	28	47
Sweden	598	25	607	29	86	3
Switzerland	335	34	319	40	58	5
Taiwan	905	920	922	835	176	146
Thailand	523	343	673	439	138	61
United Kingdom	1 839	1 169	1 793	694	305	87
United States of America	6 891	1 469	7 701	1 630	1 216	357
Other and unknown	1 870	1 956	2 244	2 284	501	445
Total	31 014	16 484	33 754	19 033	6 213	3 396

(a) The list of countries in this table reflects the volume of trade with Victoria. Information about Victoria's trade with other countries is available on request.

Source: Overseas Trade: Fasttraccs Database.

Period	Victoria		Australia		
	Imports	Exports	Imports	Exports (including re-exports)	Excess of exports
	\$m	\$m	\$m	\$m r	\$m
1998–99	31 014	16 484	97 611	85 992	–11 619
1999–2000	33 754	19 033	r 110 160	97 274	–12 886
1999					
June	2 652	1 332	8 142	6 893	–1 249
July	2 663	1 256	8 181	7 156	–1 023
August	2 748	1 352	8 871	7 347	–1 524
September	2 777	1 460	8 965	7 393	–1 572
October	3 282	1 536	10 216	7 984	–2 232
November	2 892	2 105	9 701	8 473	–1 228
December	2 653	1 716	8 922	8 375	–547
2000					
January	2 556	1 220	8 110	6 831	–1 279
February	2 702	1 678	r 8 654	8 233	–421
March	2 979	1 840	r 9 648	8 814	–834
April	2 490	1 603	r 8 004	8 271	267
May	3 035	1 704	r 10 430	9 214	–1 216
June	2 977	1 563	r 10 458	9 183	–1 275
July r	2 911	1 638	9 773	9 362	–411
August	3 302	1 758	10 743	9 372	–1 371

Source: Overseas Trade: Fasttraccs Database.

Quarter ended	Hotels, motels, guest houses and serviced apartments(a)						
	Establishments	Guest rooms	Bed spaces	Room nights occupied	Room occupancy rate	Persons employed	Takings from accommodation
	no.	no.	no.	'000	%	no.	\$'000
1998							
December	682	29 717	81 976	1 602.6	58.7	20 813	182 207
1999							
March	686	30 160	83 420	1 680.8	62.0	21 129	195 573
June	698	30 766	85 247	1 545.6	55.4	21 725	170 130
September	698	30 934	85 483	1 589.5	56.0	21 780	184 105
December	705	31 317	86 058	1 672.7	58.1	21 633	191 644
2000							
March	707	31 332	86 134	1 773.4	62.3	21 498	213 272
June	705	31 384	86 372	1 628.9	57.1	21 586	185 332

(a) Comprising establishments with 15 or more rooms or units.

Source: Tourist Accommodation, Australia (Cat. no. 8635.0) (quarterly).

APPENDIX

IMPACT OF THE NEW TAX SYSTEM (TNTS) ON DATA SERIES IN THIS PUBLICATION

BUILDING APPROVALS

Users of Building Approvals data (table 12) should exercise caution when analysing movements in the value series over the next few months as they have been affected by TNTS in a number of ways, including:

- changing patterns in demand and price changes brought about by the "bringing forward" of building activity prior to 1 July 2000;
- the introduction of the Goods and Services Tax (GST) and the abolition of the Wholesale Sales Tax; and
- the uncertainty as to whether approval values reported prior to July 2000 included or excluded the GST component.

CAPITAL EXPENDITURE

Users of Capital Expenditure data (table 15) should exercise caution when analysing estimates of expected expenditure for 2000–01 financial year. Businesses in the Survey of New Capital Expenditure have been asked to report expected expenditure for 2000–01 financial year based on the cost to them under TNTS. That is, they should deduct the WST, where it is currently paid on capital items, but not add on the 10% GST, where this amount can be returned to the business as tax credit. Therefore, if they reported on the correct basis, expenditure in current price terms on the same volume of capital would be lower than if the changes in tax arrangements had not taken place. The basis for businesses reporting expenditure for periods prior to 30 June 2000 is unchanged.

Investigations have shown that the majority of businesses have been unable to report expected expenditure on the requested basis because their capital expenditure budgets are not sufficiently detailed at this stage to take account of expected price changes.

RETAIL

Users of Retail data (table 18) should exercise caution when analysing movements in the series over time. Estimates of retail turnover in both original and seasonally adjusted terms reflect unusually large spending ahead of the GST. The trend series may be adversely affected by an unusual influence in the original and seasonally adjusted data. As pre-GST original and seasonally adjusted estimates include spending that is one-off rather than part of the underlying behaviour of the series, this impact has, as far as practicable, been estimated and excluded from the retail trend series.

It is expected that recent changes in spending behaviour associated with the TNTS may occur for several more months before regular shopping patterns are re-established. In addition, from July 2000 the retail series records turnover inclusive of GST (but excluding embedded wholesale taxes) where applicable, which means that there is a change in the valuation basis for the series. It will not be possible for the ABS to reliably estimate the impact of these post 30 June valuation and behaviour changes for some months. Therefore, the retail trend series has been suspended as at June 2000 until the underlying behaviour of the series stabilises. Original and seasonally adjusted series (which include the irregular component of the series) will continue to be published.

FOR MORE INFORMATION...

- INTERNET** www.abs.gov.au the ABS web site is the best place to start for access to summary data from our latest publications, information about the ABS, advice about upcoming releases, our catalogue, and Australia Now—a statistical profile.
- LIBRARY** A range of ABS publications is available from public and tertiary libraries Australia-wide. Contact your nearest library to determine whether it has the ABS statistics you require, or visit our web site for a list of libraries.
- CPI INFOLINE** For current and historical Consumer Price Index data, call 1902 981 074 (call cost 77c per minute).
- DIAL-A-STATISTIC** For the latest figures for National Accounts, Balance of Payments, Labour Force, Average Weekly Earnings, Estimated Resident Population and the Consumer Price Index call 1900 986 400 (call cost 77c per minute).

INFORMATION SERVICE

Data which have been published and can be provided within five minutes are free of charge. Our information consultants can also help you to access the full range of ABS information—ABS user-pays services can be tailored to your needs, time frame and budget. Publications may be purchased. Specialists are on hand to help you with analytical or methodological advice.

- PHONE** **1300 135 070**
- EMAIL** **client.services@abs.gov.au**
- FAX** 1300 135 211
- POST** Client Services, ABS, GPO Box 796, Sydney 1041

WHY NOT SUBSCRIBE?

ABS subscription services provide regular, convenient and prompt deliveries of ABS publications and products as they are released. Email delivery of monthly and quarterly publications is available.

- PHONE** 1300 366 323
- EMAIL** subscriptions@abs.gov.au
- FAX** 03 9615 7848
- POST** Subscription Services, ABS, GPO Box 2796Y, Melbourne 3001



2130320009006
ISSN 0158-202X

RRP \$17.50